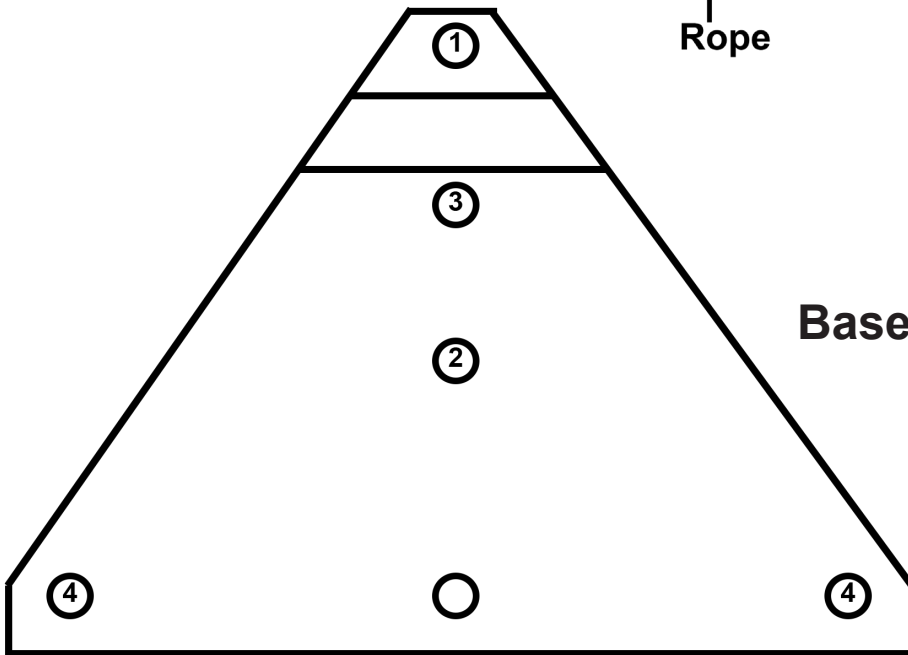


V'eed Cutter Parts & Hardware

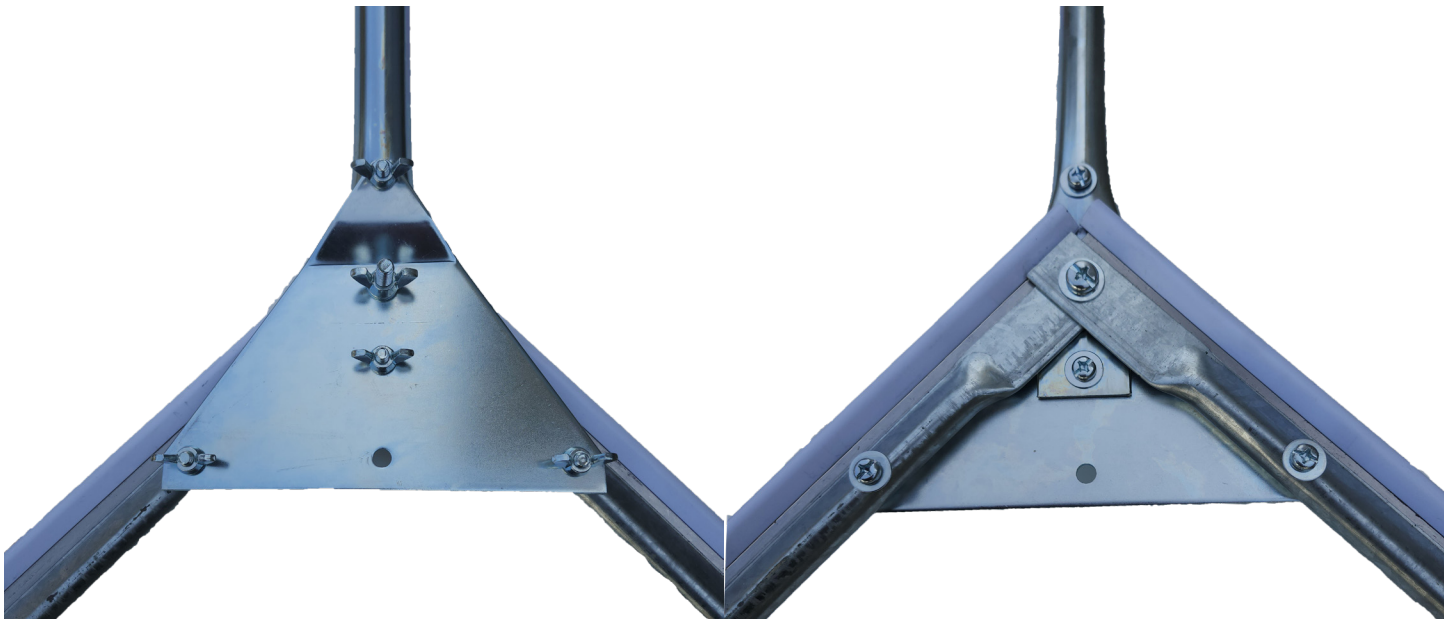


- 5/16" x 1-1/2"
- 1/4" x 1-1/4"
- 1/4" x 1/2"
- 1/4" x 3/4"
- Self-Tapping Screws

V'eed Cutter Assembly Instructions

Leave nuts and bolts loose until all are installed, then tighten with pliers or an adjustable wrench. Do not overtighten.

1. Place the lower handle on a flat surface with the flat part facing up.
2. Place the base on top of the lower handle with the bend of the base conforming to the bend on the lower handle.
3. Install the 1/4" x 1-1/2" bolt with the corresponding flat washer through the top hole of the handle and hole 1 in the base. Install the corresponding lock washer and wing nut.
4. Install the 1/4" x 3/4" bolt with the corresponding flat washer through the bottom hole of the handle and hole 2 in the base. Install the corresponding lock washer and wing nut.
5. Place both blades under the lower handle and base to form a "V" with the sharp edges of the blades pointing outwards, creating the cutting surfaces. Install 5/16" x 1-1/2" bolt with the corresponding flat washer through the end hole of both blades, the center hole of the lower handle and hole 3 in the base. Install the corresponding lock washer and wing nut.
6. Install 1/4" x 1-1/4" bolt with the corresponding flat washer through hole 4 in the base and both blades. Install the corresponding lock washer and wing nut.
7. Slide the upper handle into the lower handle and align holes. Install and tighten 2 self-tapping screws.
8. Thread rope through the hole in the top of the upper handle and tie securely close to the end to ensure rope will not come loose and pull through while in use.



Directions for use

1. Hold the V'eed Cutter with the handle in one hand and the rope in the other hand.
2. Throw the V'eed Cutter into the water.
3. Allow the V'eed Cutter to sink to the bottom.
4. Pull the rope in using short tugging motions.
5. Remove the debris and repeat.