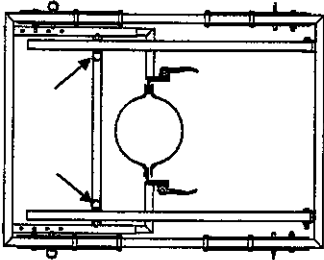
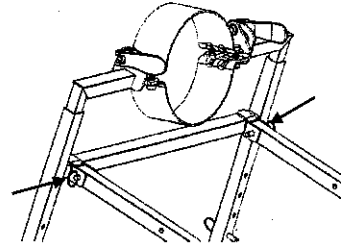


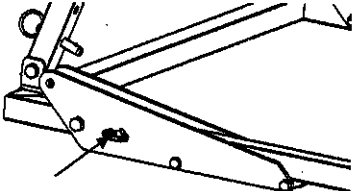
SETUP



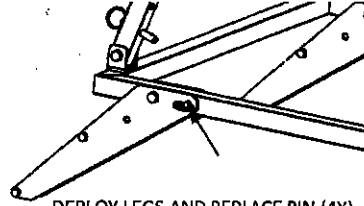
REMOVE PINS HOLDING MOTOR MOUNT AND SUPPORT ARMS (2X)



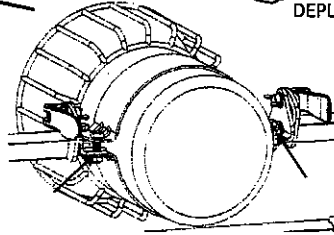
TILT UP MOTOR MOUNT AND SUPPORT ARMS, REPLACE PINS (2X)



REMOVE PIN SECURING LEGS (4X)

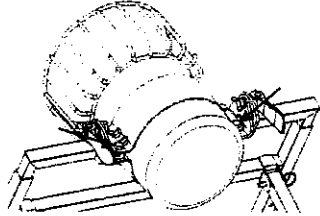


DEPLOY LEGS AND REPLACE PIN (4X)

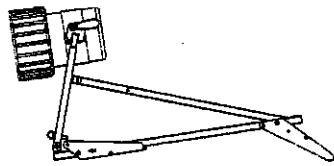


INSTALL MOTOR AND TIGHTEN MOTOR MOUNT BOLTS (4X)

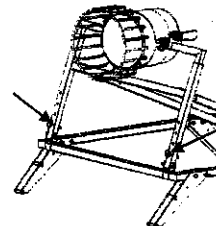
ADJUSTMENT



RELEASE CAM HANDLES TO ADJUST TILT ANGLE (2X)

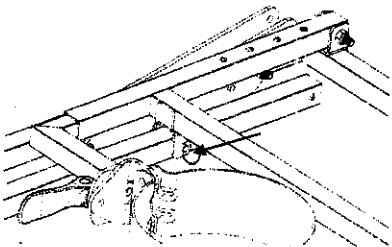


FOR ADDITIONAL DOWNWARD TILT, COLLAPSE FRONT LEGS

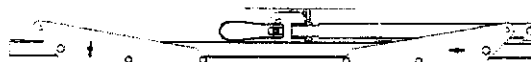


REMOVE PINS TO ADJUST HEIGHT (2X)

STORAGE



COLLAPSE MOTOR MOUNT AND SUPPORT ARMS, USE PIN TO SECURE IN PLACE



RETRACT LEGS